

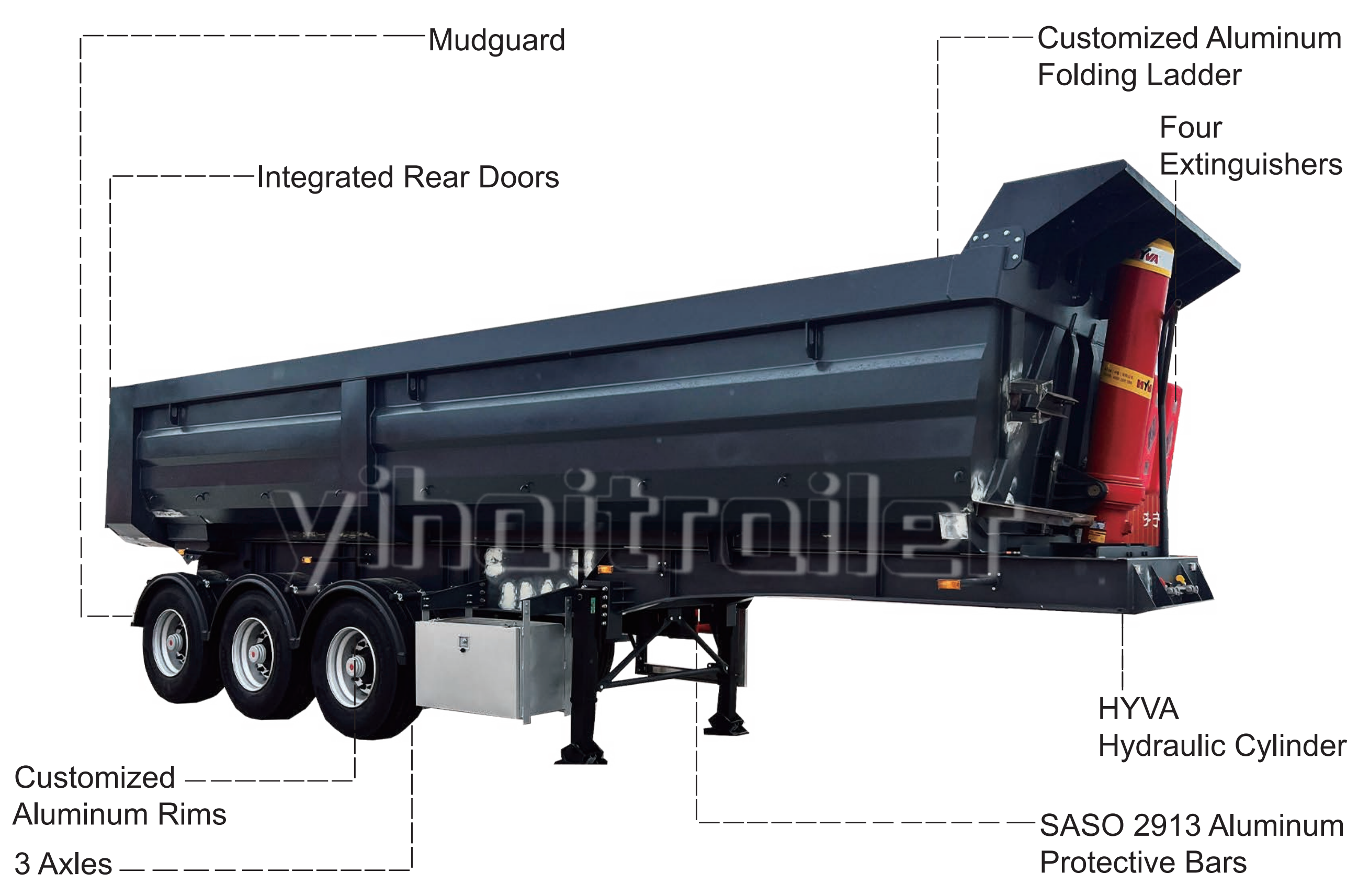
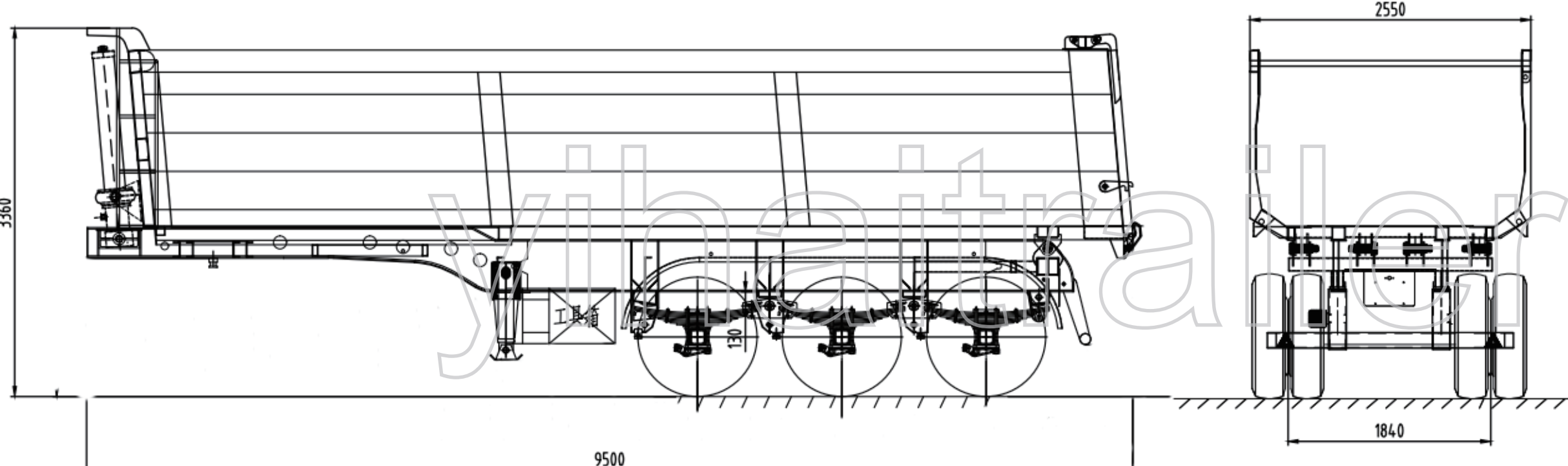
End tipper trailer is a freight trailer specifically designed for unloading goods. In brief, its main feature is a tail unloading mechanism that can quickly unload goods. Therefore, this type of trailer is typically used for transporting bulk goods such as gravel, coal, soil, building materials, etc.



In other words, tipper trailers typically have a lifting mechanism. This mechanism can tilt the cargo box to an appropriate angle. As a result, it allows the cargo to slide out on its own. As a result, industries such as construction, mining, agriculture, and earthwork widely use this type of trailer.

All in all, it can improve unloading efficiency, reduce labor costs, and adapt to the transportation needs of large quantities of bulk goods.

Specification	
Size	8600mm*2550mm*3890mm
Capacity	40tons/40cbm
Thickness	Side Wall:4 Floor:6mm
Hydraulic System	Hydraulic System
Hydraulic Cylinder	1 pcs
Hydraulic Oil Box	1 pcs:40L
Walking System	Walking System
Axles	13Ttons*3 pcs
Tire	11R22.5*12+1 pcs
Landing Leg	20tons Landing Leg; Static support capacity 80 tons
Application	sand, stone, coal



### Customized Aluminum Rims

Customized aluminum alloy rims for a dump truck offer a lightweight design, enhancing payload capacity and fuel efficiency. Additionally, their corrosion resistance and durability contribute to an extended vehicle lifespan and reduced maintenance costs.



### HYVA Hydraulic Cylinder

HYVA hydraulic systems excel in providing efficient and precise operation, ensuring smooth control. Their high reliability and durability contribute to extended equipment lifespan and reduced maintenance costs.



### SASO 2913 Aluminum Protective Bars

The protective bars on a trailer help improve road safety by reducing the risk of accidents. It decreases the chances of collisions and injuries resulting from small vehicles accidentally entering the underside of the trailer, thus protecting the safety of other road users.



### Integrated Rear Doors

Integrated rear doors are typically designed for easy operation, enabling quick unloading through simple control mechanisms. This design streamlines the unloading process, improving operational convenience and efficiency.

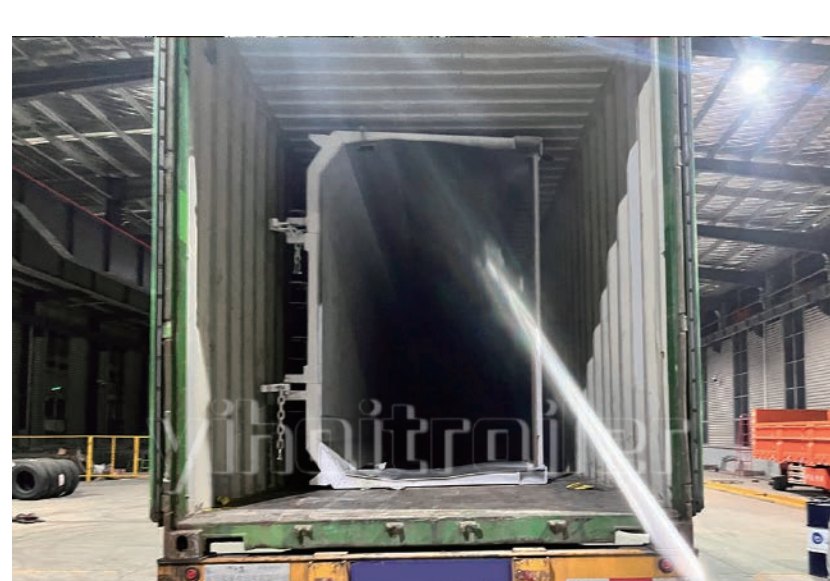


The U-shaped rear tipping dump truck is a specially designed type of truck with applications in various sectors, including:

- 1. Mining and Quarrying:** The U-shaped rear tipping dump truck excels in transporting heavy bulk materials such as ore, coal, and stone.
- 2. Construction Industry:** Due to its ability to quickly unload materials, the U-shaped rear tipping dump truck is popular for transporting construction materials like sand, gravel, and concrete.
- 3. Road and Infrastructure Construction:** In road and infrastructure construction projects, the U-shaped rear tipping dump truck is employed for transporting significant quantities of construction materials such as soil and gravel.



Rear Tipper Trailer is a type of trailer developed specifically for transportation, mining, and construction industries.



## FAQ

- 1. Does this trailer comply with Saudi SASO standards?**  
 ---Yes. The overall design of the trailer and the selection of all components are both in accordance with SASO standards
- 2. Can the color of this trailer only be black?**  
 ---The colors can be customized according to the requirements of the partners. You just need to inform us that you need RAL before placing the order.
- 3. The size of this trailer does not meet the requirements of our country. Can you produce it according to our country's requirements?**  
 ---Of course, you only need to inform us of your country's transportation requirements, and we can customize them specifically for your transportation needs. If you are not very clear about the transportation needs of your country, we can provide you with a design plan based on our production and export experience.