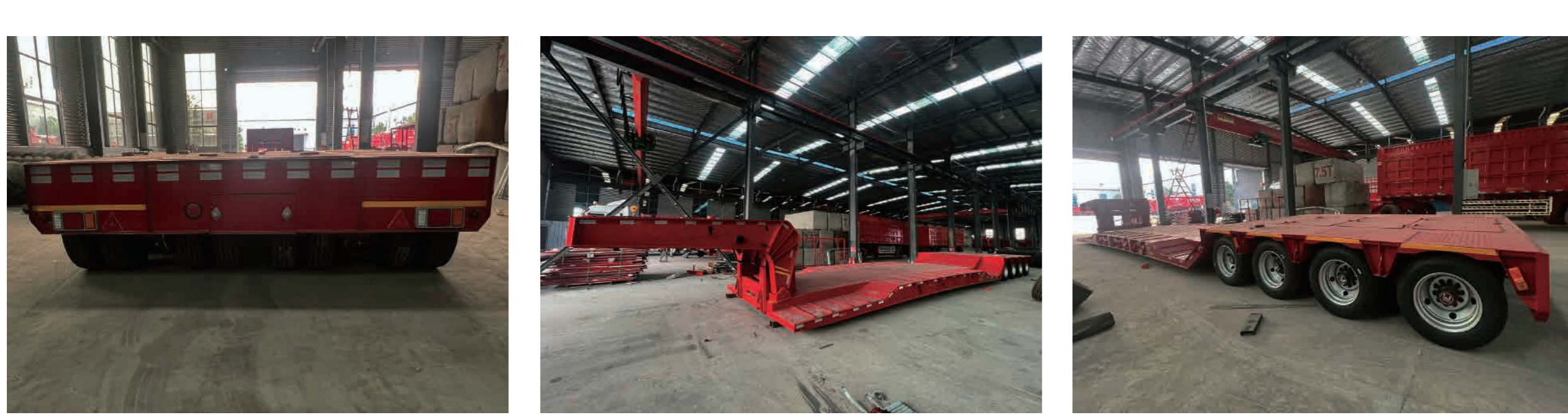
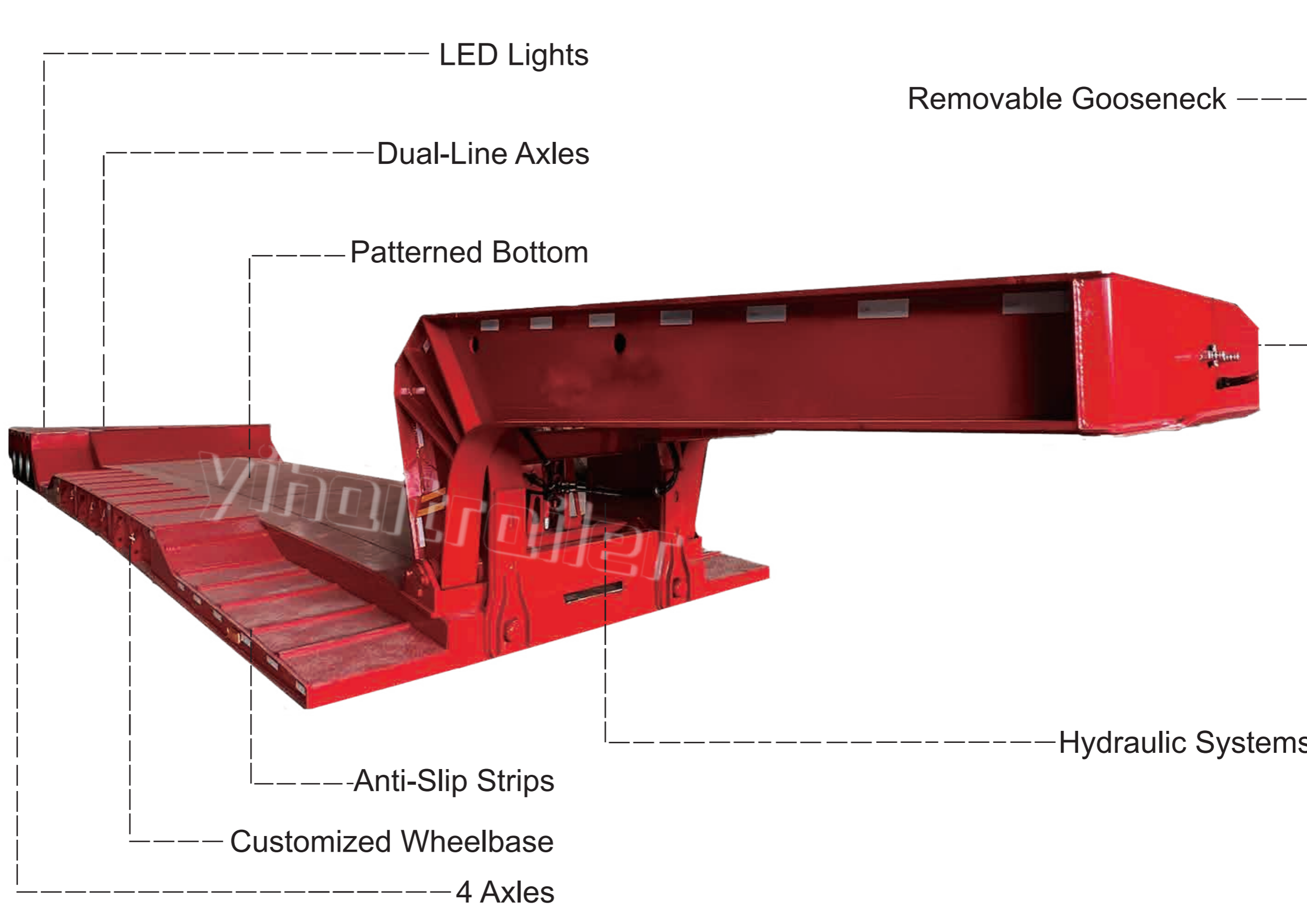
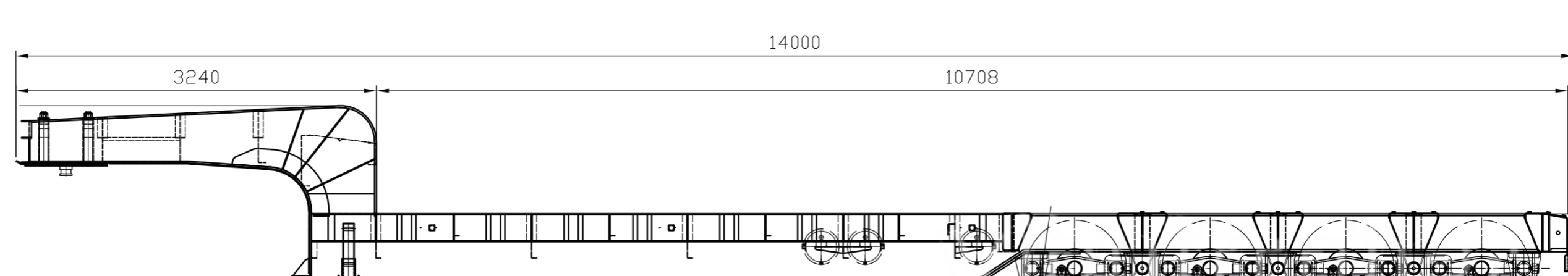


The 3-axle low bed trailer (special gooseneck) is particularly suitable for transporting goods with a length exceeding the standard limit due to its specially customized length of 18500mm. Because of its ultra long low bed design, this trailer can provide additional lateral space for goods. This includes construction equipment, large machinery, engineering vehicles, steel, concrete beams, and other large or exceeding length goods.



1. Suitable for large cargo: 3-axle low bed trailer is suitable for transporting large and height exceeding goods, as its flatbed design and low height make it easier to load and unload cargo.
2. Multipurpose: This trailer is suitable for various types of cargo, including construction equipment, building materials, engineering vehicles, agricultural equipment, and more. It can meet different transportation needs.
3. Easy to load and unload: Due to the flatbed design, cargo can be loaded and unloaded from the sides or top of the trailer, which increases flexibility and reduces loading and unloading time and costs.
4. Safety: The low height of the trailer helps improve the stability and safety of transportation and reduces the wobble of the goods during transportation.

Specification	
Overall Length	15,500mm
Fixed Overall Width	3,000mm
Overall Height	1,850mm
Working Plate Height	1,180mm
Walking System	
Suspension	Heavy Load Air Suspension
Axles	13 Tons; German Type
Tyre	8.25-20*12pcs
Tool Box	Customized Long Toolbox
Side Protection	Customized Long Toolbox
Color	Customized
Hydraulic System	
Hydraulic Cylinder	2 pcs



### Hydraulic Systems

Hydraulic systems provide more precise and smooth control, especially crucial for tasks that require high precision. Moreover, compared to traditional control methods, hydraulic systems are more efficient and can respond to operator commands more quickly.



### Customized Wheelbase

Customized wheelbase allows the detachable low-profile gose neck plate to better adapt to different types of cargo or projects. By adjusting the wheelbase, it becomes more effective in balancing loads, ensuring stability when transporting items of varying sizes and weights.



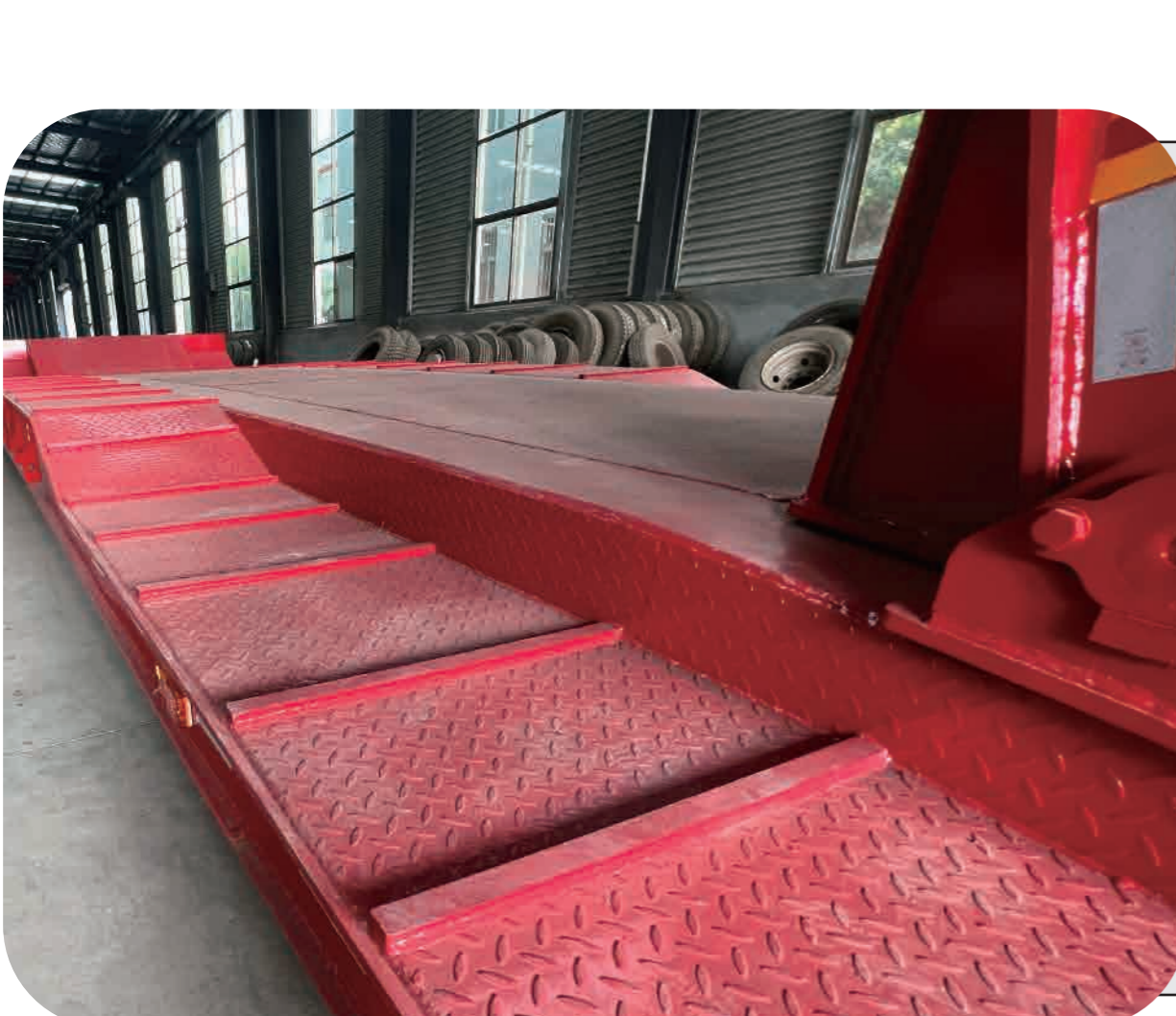
### Dual-Line Axles

The dual-line axle design enhances the stability and load-bearing capacity of the plate. By having dual-line axles on both sides of the plate, weight is more evenly distributed, improving overall balance and making the transportation and handling of goods safer.



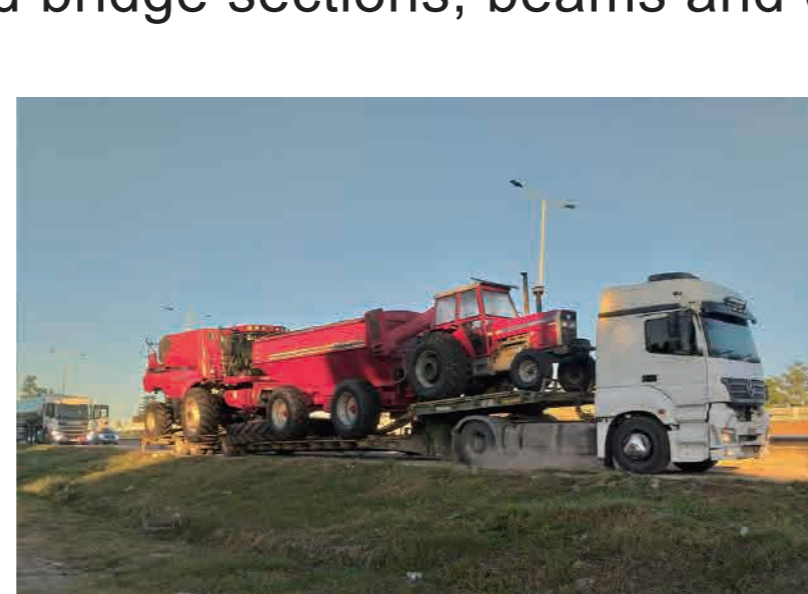
### Anti-Slip Strips

The anti-slip strips increase the friction on the surface of the plate, improving the traction of the vehicle. This is particularly important when driving in wet or rugged road conditions.

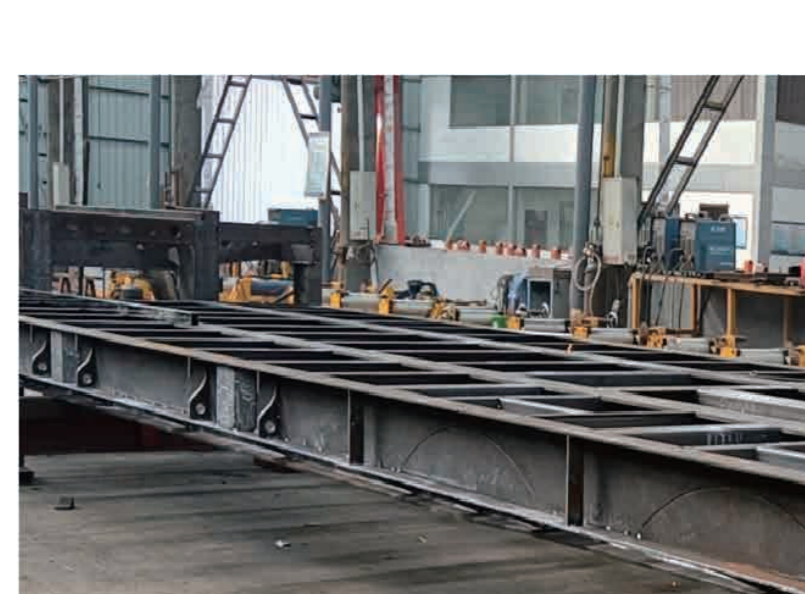


## The application fields for a removable gooseneck lowbed trailer:

1. Heavy Machinery and Equipment: This includes excavators, bulldozers, cranes, pavers, and other large machinery commonly used in construction and infrastructure projects.
2. Oversized and Overheight Loads: It is suitable for transporting items such as large steel structures, industrial components, and oversized machinery that may exceed standard legal size limits.
3. Construction Components: This type of trailer is well-suited for transporting construction components like prefabricated bridge sections, beams and columns.



The 3-axle low bed trailer (special gooseneck) is a specially designed trailer mainly used for transporting large construction machinery and equipment.



MATERIALS PREPARATION

MAIN BEAM

CHASSIS COMPLETED



PAINTING COMPLETED

SAND BLASTING AND RUST REMOVAL

WHOLE TRAILER COMPLETED

## FAQ

1. This trailer looks very long. How does it ensure smooth transportation?  
---This trailer is specially customized according to the needs of our partners. Its structure and stress have been strictly simulated by our engineers, so its transportation is very smooth to ensure the safety of cargo transportation.
2. What is the carrying capacity of this trailer?  
---This trailer has a carrying capacity of 40 tons because it is mainly used to transport over-long cargo and generally does not transport cargo that requires a concentrated load.
3. How long is the production cycle?  
---For specially customized trailers, the production lead time is approximately 25-35 working days.