

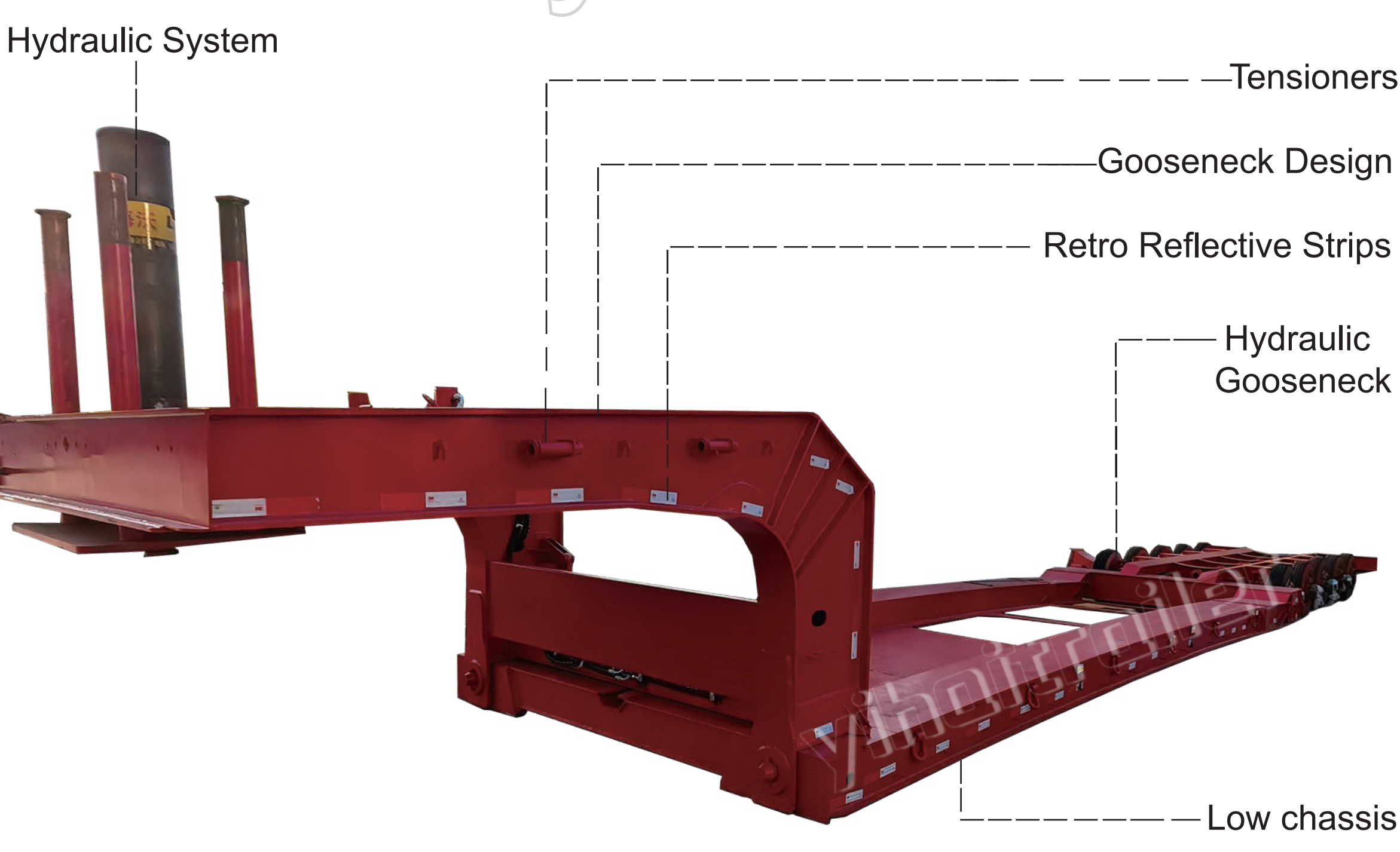
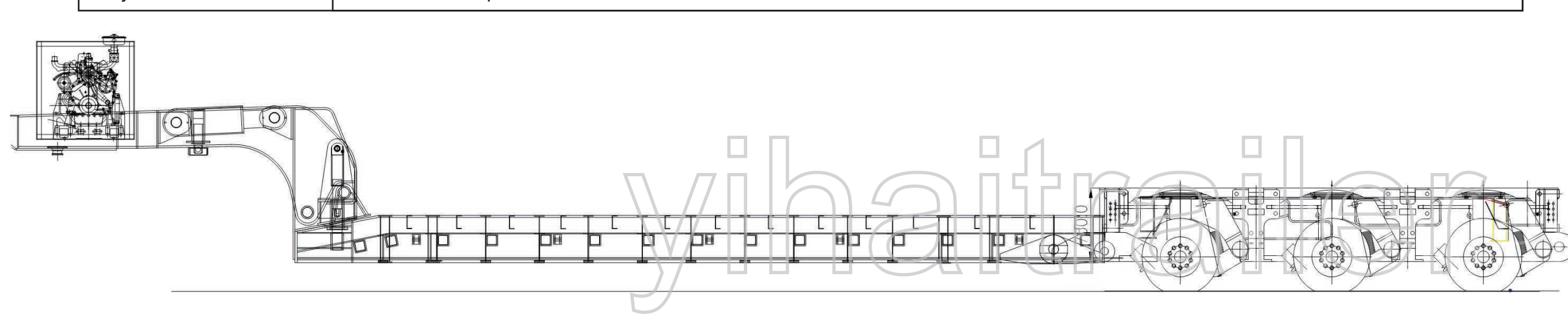
The structural characteristics of the Lowboy trailer are very obvious. Generally, its working board ground clearance is extremely low. As a result, the overall structure presents a high-low-high characteristic. In addition, one can optionally install a rear ladder according to different transportation needs. Due to its special design, the lowboy trailer provides a high degree of stability and safety. Above all, it is suitable for transporting large equipment and cargo.



Hydraulic lifting and lowering of the traction plate at the gooseneck is also essential when equipped with an air suspension to adjust the working plate height as needed. In addition, when adjusting the working plate and the gooseneck at the same time, the trailer and the tractor can match perfectly. As a result, the fuel economy and tire wear can be minimized.

SPECIFICATION&DRAWING

Specification	
Overall Length	15,000mm
Fixed Overall Width	3,000mm
Overall Height	1,650mm
Working Plate Height	250mm(Customized)
Width Of Ramp	1,100mm
Walking System	
Suspension	Heavy Load Mechanical Suspension
Landing Leg	Mechanical Landing Leg;Double Speed Telescopic, Manual Uses The Mechanical Bear Side Landing Leg, Operated Manually
Axles	13 Tons; German Type
Tyre	11R22.5*12+1 pcs



DETAILS OF TRAILER

--Hydraulic System

The lowboy trailer employs hydraulic control, offering flexible adjustment of the chassis height to accommodate various types of cargo and expedite the loading/unloading process. This system also mitigates impact during cargo transfer, and enhances the trailer's adaptability to diverse terrain conditions.



--Gooseneck Design

The gooseneck design in trailers, featuring a low connection point, enhances stability for long-distance and heavy-duty transport. This configuration allows for the efficient transportation of larger, heavier loads and improves overall maneuverability to meet diverse transportation requirements.



--Low chassis

The low chassis of a lowboy trailer improves stability and maneuverability, while also facilitating the easier loading and unloading of tall or oversized cargo. Additionally, the reduced height minimizes the risk of height restrictions, allowing for more versatile transportation routes.



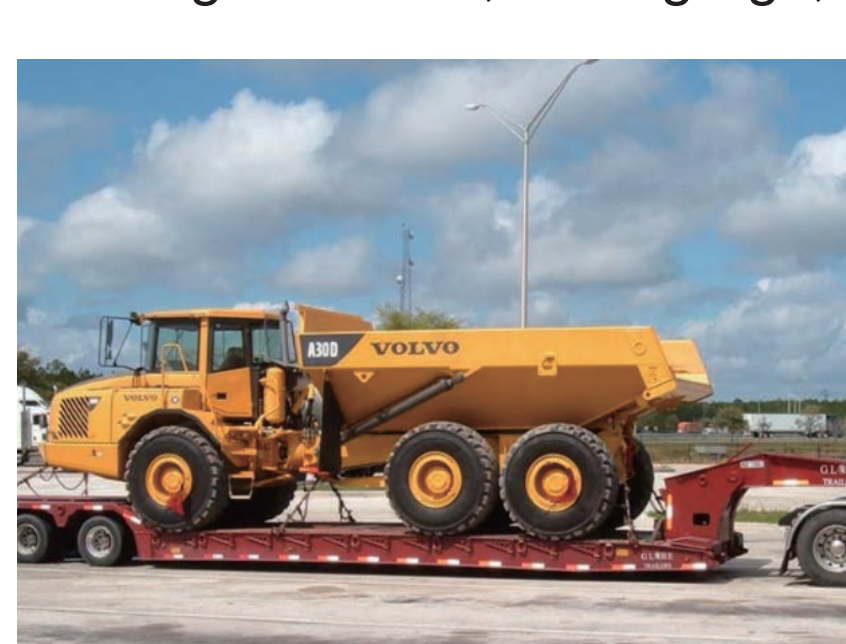
--Tensioners

On a Lowboy trailer, the purpose of the tensioners is to secure and stabilize the cargo during transportation by fastening and tying it. This ensures compliance with regulations, minimizes cargo movement, and simplifies the unloading process.



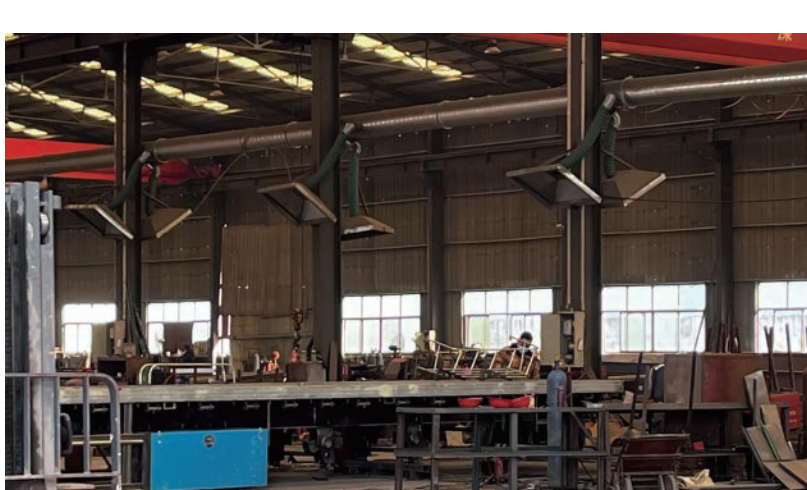
A 4-axle lowboy trailer is commonly used in the following application areas:

- 1.Heavy Equipment Transport:** Due to its robust load-bearing capacity and stability, a 4-axle lowboy trailer is widely used for transporting heavy equipment and large machinery, such as excavators, bulldozers, and road rollers.
- 2.Construction and Engineering Industry:** These trailers are suitable for transporting large materials and equipment required at construction and engineering sites, including steel, concrete beams, and construction machinery.
- 3.Energy and Mining:** In the energy and mining sectors, 4-axle lowboy trailers are used to transport heavy equipment such as generators, drilling rigs, and large mining machinery.



Lowboy trailer is a very special trailer in the low bed trailer category, which is specially used to transport super high and heavy cargo, such as large mechanical equipment, chemical industry reactors and construction machinery and equipment.

PRODUCTION PROCESS



MATERIALS PREPARATION



MAIN BEAM



CHASSIS COMPLETED



PAINTING COMPLETED



SAND BLASTING AND RUST REMOVAL



WHOLE TRAILER COMPLETED

FAQ

- 1.What are the main uses of Lowboy trailer?**
---Lowboy trailer is usually used to transport goods with heavy load, such as excavators, loaders, construction equipment, wind turbines, bridge beam sections, steel beams, etc. They are commonly used in construction, excavation, mining, agriculture and energy industries, among others.
- 2.What are the different types of Lowboy trailer?**
---There are a variety of different types of lowbed trailers, including lowboy trailers, retractable lowbed trailers, multi-axle lowbed trailers and special purpose lowbed trailers, each suitable for different cargo and transportation needs.
- 3.What is the load capacity of a Lowboy trailer?**
---The load capacity of Lowboy trailer varies by model and design. Generally, they can carry cargo ranging from a few tons to hundreds of tons. Special extra heavy-duty low bed trailers can be used to transport heavier loads.